



KWA Architects   
Chartered Architects and Interior Designers



[www.kwa.bz](http://www.kwa.bz)

185/21, Havelock Road,  
Colombo 5, Sri Lanka

---

# KWA ARCHITECTS

---

Chartered Architects & Interior Designers  
practice profile



# company details







---

Title :	KWA Architects
Registration :	Partnership
Business Registration No. :	WD 9900
Nature of Business :	Architectural & interior design consultancy services.
Date of Registration :	07-01-2008

---

[Registration under the Business Names Ordinance (Cap149) incorporated by Business Names Statute No. 40/1990. Copy of the Business Registration Attached]

---

	Registered Office	11B/25, Low Level Road, Hewagama, Kaduwela, Sri Lanka.
	Practice Office	No: 185/21, Havelock Road, Colombo 05, Sri Lanka
	Telephone	+94 77 761 8518   +94 77 931 7517   +94 77 036 6641
	Email	projects@kwa.bz
	Website	www.kwa.bz
	Partners	» Thilan Koththigoda Chartered Architect » Thushari Wijesundara Koththigoda Chartered Architect

---

Bankers :  
Sampath Bank PLC | NDB Bank PLC | COMMERICAL BANK PLC

---

# about us

KWA Architects is an international award winning all service architectural practice operating out of Colombo, Sri Lanka. Our experience spans from high-rise architecture to hospitality, mixed use, residential & industrial works. Our award winning Interior design division KWA Interior new wave has a wealth of experience in retail design, restaurant design, hospitality design and corporate interiors. Our team of architects and interior designers bring together experience from Europe, Middle East and Australia. With our team of specialist consultants in engineering, cost consultancy & project management, we aspire to deliver world class design solutions to our clients.



# services offered

---

1. Architectural design
2. Interior design
3. Structural & mechanical, electrical, plumbing engineering design
4. Cost consultancy
5. Project management
6. Planning and building permit approvals services
7. Development potential assessment and evaluation
8. Technical feasibility and technical due diligence evaluation
9. 3D visualisation
10. Graphic & Communication design

# awards

---



## **Muse Design Awards 2020, New York**

Gold Award,  
Residential Architecture

Tropical Stack House, Battaramulla



## **Muse Design Awards 2020, New York**

Silver Award,  
Commercial Architecture

Thilakawardhana Textiles,  
Kiribathgoda

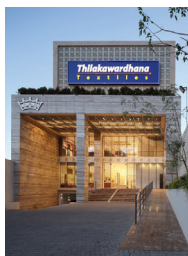
# awards

---



**Asia Pacific  
Property Awards 2019/ 20**  
Architecture  
Single Residence, Sri Lanka

Floated House, Kandy



**Asia Pacific  
Property Awards 2019/ 20**  
Retail Interior  
Sri Lanka

Thilakawardhana Textiles, Kandy



**Asia Pacific  
Property Awards 2019/ 20**  
Commercial Interior  
Sri Lanka

Amazon Teas, Colombo

# awards

---



**Asia Pacific  
Property Awards 2016/ 17  
Highly Commended:**

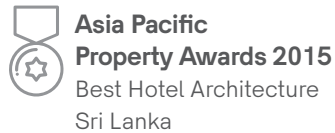
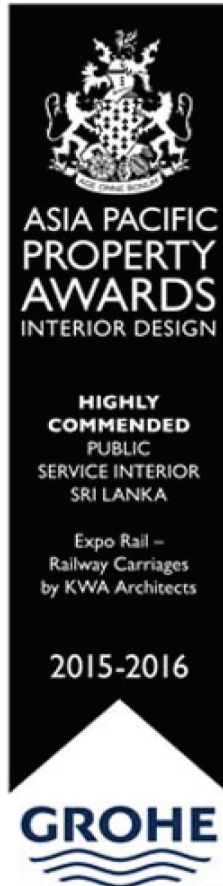
Architecture  
Single Residence, Sri Lanka

Layered House, Colombo 08

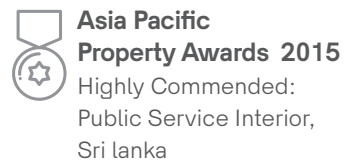


# awards

---



Reefs Edge Hotel,  
Uswetakeiyawa



Expo Rail Railway Carriages

# publications

---

## Internationally acclaimed websites

1. archdaily.com - two projects
2. archello.com - two projects

## Local publications

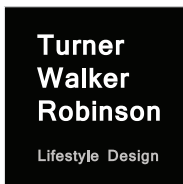
1. Architect magazine
2. Domus Magazine
3. Real Estate Partner Magazine

## Books

1. The Contemporary Urban House

## group companies

---



Turner Walker Robinson  
Melbourne, Australia



KWA Interiors Pvt Ltd.  
Colombo, Sri Lanka

---

## international collaborations

---

+

+

Aedas

+

+

**Aedas**  
London, Singapore,  
Hong Kong & 10 other offices  
around the world.

# partners

Chartered Architects Thilan Koththigoda & Thushari Wijesundara act as the principal architects and leads the design and management team. Partners have international working experience from the United Kingdom, Middle East and Australia as well as local experience working with reputed Sri Lankan Architects & developers.



**Thilan Koththigoda**  
Chartered Architect

AIA(SL), RIBA, RDI(New York), GreenSL(AP),  
M.Sc.(Architecture), B.Sc.(Built Environment),  
Dip.(Advertising and Communication)

Thilan worked in the UK and the Middle East prior to forming KWA and has won numerous academic awards including Professor K.R.S. Peiris Design award for the best designer in M.Sc. Architecture. Sri Lanka Institute of Architects award for the best part III results, Sri Lanka Institute of Architects award for the best results in M.Sc. Architecture and from the University of Moratuwa, the awards for best results in M.Sc. Architecture and B.Sc. Built Environment degrees, Thilan also acts as a visiting tutor of design for the University of Moratuwa & the City School of Architecture.



**Thushari Wijesundara**  
Chartered Architect

AIA(SL), RIBA, M.Sc. (Architecture),  
B.Sc. (Built Environment),  
Dip.(Interior Design)UK

Thushari worked in the UK and the Middle East prior to forming KWA and completed her Diploma in Interior Design while working in London. Thushari also acts as a visiting tutor of design for the City School of Architecture, & lecturer for M.Sc. Interior Design course at University of Moratuwa.

# partners

## Special Projects



**Bhashwara Gunarathne**  
Chartered Architect

AIA(SL) ,RIBA, M.Sc (Architecture),  
B.Sc. (Built Environment) Hons

Bhashwara served as the chairman & Director general of Sri Lanka Tourism Development Authority & Sri Lanka Tourism Promotion Bureau from 2010 to 2015 where he oversaw substantial growth in the tourism industry in Sri Lanka including the largest number of tourist arrivals ever to the country in 2014. He was instrumental in increasing the tourist arrivals to Sri Lanka from China and Eastern Europe.

---



**H.H.P.Lahiru Dharmasiri**  
Chartered Architect

AIA(SL) ,RIBA, M.Sc (Architecture),  
B.Sc. (Built Environment) Hons

Lahiru worked with Suchith Mohotti Associates (Pvt) Limited as a Junior Architect, After obtaining the professional qualifications he worked with The Design Group Five International (Pvt) Ltd & Design Advocacy (Pvt) Ltd. During his academic career he was awarded Geoffery Bawa Award for Comprehensive design Project report at the M.Sc. Architecture final examination & Highly Commendation pass for the Comprehensive Design Project. He is also a Design Tutor for year II, University of Moratuwa & for Year I Part II, City School of Architecture.

---



**Dilshan Weeraratne**  
Chartered Architect

AIA(SL), RIBA, M.Sc. (Architecture),  
B.Sc. (Built Environment),

Dilshan worked in several reputed architectural practices in Sri Lanka. He has worked under Archt. Narein Perera as a junior architect and gained experience in creative aspects, concept development and project management. After obtaining masters, Dilshan started his practice n Engineering consultant limited as an Architect and also worked with Avant Garde Urban Design partnership after qualifying as a chartered Architect. During this period he has obtained experience partnership after qualifying as a chartered Architect.



**Srirama C.N.K.N**

Chartered Architect

AIA(SL),B.Arch (Hons)

Srirama, work with several reputed Architectural practices in Sri Lanka. He started his career in Architecture with PWA Architect as Junior Architect (2007/2008 – 2009 / 2011). After obtaining the Professional Qualification in 2012, he joined with Design team 03 (PVT) Ltd & work as the team leader on several mega projects including the tallest building in the country. During the period 2012 to 2016, he gained a vast experience in development of ultra-high rise, High rise, medium & low-rise buildings for Condominium developments, City hotels, Luxury hotels, Office buildings, Mixed development as well as Master planning.

---



**Aushadhi Gunadasa**

Chartered Architect

AIA(SL),B.Arch (Hons)

Aushadhi, work with Mohan Neligama Associates (2007/2008) as junior Architect & subsequently joined with “Sheran Henry Associates” in 2011. She acquired her professional qualification in 2013 & continued to work as Chartered Architect for “Sheran Henry Associates” specialized on project categories including retail, hospitality, institutional and personalized housing.



# professional & managerial staff (In-House)

Name	Educational Qualifications	Designation & Professional Qualifications
Thilan Koththigoda	MSc(Architecture), Bsc(BE)Hons, DIP(Advertising & Com.)	Partner Chartered Architect, RIBA, AIA(SL), Green(SL)AP, RDI(NY)
Thushari Wijesundara	MSc(Architecture), BSc(BE)Hons, DIP(Interior Design)UK	Partner Chartered Architect, RIBA, AIA(SL)
Bhashwara Gunarathna	MSc(Architecture), BSc(BE)Hons,	Partner – Special Projects Chartered Architect, RIBA, AIA(SL)
Lahiru Dharmasiri	MSc (Architecture), BSc (BE)Hons	Partner – Special Projects Chartered Architect, RIBA, AIA(SL)
Dilshan Weeraratne	MSc (Architecture), BSc (BE)Hons	Partner – Special Projects Chartered Architect, RIBA, AIA(SL)
Srirama C.N.K.N	B.Arch (Hons)	Partner – Special Projects. Chartered Architect AIA (SL)
Aushadhi Gunadasa	B.Arch (Hons)	Partner – Special Projects. Chartered Architect AIA (SL)
Dananjaya Bandara	MSc (Architecture), BSc (BE)Hons	Associate Chartered Architect AIA(SL)
Lahiru Pitawalage	B.Arch(Hons)	Associate Chartered Architect AIA(SL)

Name	Educational Qualifications	Designation & Professional Qualifications
Sanjeewa Jinadasa	B.Arch(Hons)	Project Architect Chartered Architect AIA(SL)
Praneeth Dilan	B.Arch(Hons)	Project Architect Chartered Architect AIA(SL)
Hasindu Athapaththu	B.Arch(Hons)	Project Architect Chartered Architect AIA(SL)
Wickum Wijesinghe	B.Arch(Hons)	Project Architect
Dharma Sri Udawaththa	B.Arch(Hons)	Project Architect
Aashubodha Gurusinghe	B.Arch(Hons)	Project Architect
Chamika Darshani	B.Arch(Hons)	Project Architect
Jayamalie Gunarathne	B.A. in Interior Architecture	Senior Interior Designer
Champika Amarasinghe	Dip (Civil Drafting & Quantity Surveying)	Senior Building Technologist/ Architectural licentiate
Janitha De Alwis	B.A. in Interior Architecture	Interior Designer
Nilakshi Herath	Undergraduate	Architectural Intern
Naveen Weerasekara	Undergraduate	Architectural Intern
Priyashi Wijeratne	Undergraduate	Architectural Intern
Mahinda Galagedara	NDES in Civil Engineering	Senior Project Engineer

# professional staff (Consultants)

Name	Educational Qualifications	Designation & Professional Qualifications
Nuwan Bandaranayake Edifice Consultants	Bsc.Eng. (Hons), PG Dip (Struct.Eng.Design), C.Eng.MIE (SL), AMSSE (SL)	Director Engineering Edifice Consultants (PVT) LTD. Chartered Engineer MIE (SL), AMSSE (SL)
Priyantha Pushpakumara	M.Sc, B.Sc.(Hons)Eng, PG.Dip (Structural Engineering Design), PG.Dip (Construction Project Management)	Consultant Structural Engineer MIE(SL), MSST
Shiran Jayalath Haritha Consultants	B.Sc.(Eng), PG Dip in Building Services Engineering, C.Eng, MIE(SL) GMCIBSE, ACS	Managing Director, Haritha Consultants (PVT) LTD. Visiting Lecturer, University of Moratuwa Chartered Engineer MIE(SL) GMCIBSE, ACS
Chandana Wanaguru	B.Sc (Eng), MSc/PG Dip (ELEC.INS)	Consultant MEP Engineer AMIE, MASHRAE
Hasitha Gunasekara ARQS Consultant	B.Sc in Quantity Surveying, M.Sc in Project Management, Dip. Commercial Low & Arbitration	Managing Director, ARQS Consultant (PVT) LTD, FIQSSL, ACIArb, MCIOB, MRICS, MAIQS, CQS GREENSL® AP (GBCSL)

# current **projects**

key projects

Project	Category & Floor Area	Services Provided	Stage & Expected Completion
09 Story Commercial Shopping Complex (Shopping Floors, Cinemas, Offices) , Kandy	Retail & commercial	Architectural / Interior Design	Construction 2020
2000 Capacity Banquet Hall & Convention Centre, Kotte	Hospitality	Architectural / Interior Design	Construction 2020
1100 Seating Capacity Banquet Hall & Hotel , Pelmadulla	Hospitality	Consortium	Construction 2021
Arpico Hypermarket, Hyde Park Corner Refurbishment & Re-design	Retail	Architectural / Interior Design	Design 2020
Extensions & Alterations to Phoenix Plastics Manufacturing Facility, Horana	Commercial	Architectural / Interior Design	Construction 2020
Conversion & redesign of Corporate Office Complex, Crescat Boulevard	Commercial	Architectural / Interior Design	Detailed design 2020
48 Unit Apartment Complex , Ethul Kotte	Residential	Architectural / Interior Design	Construction 2021
50,000 Sq.Ft. Department Store, Nittambuwa	Retail	Architectural / Interior Design	Construction 2020
65,000 Sq.Ft. Department Store, Kandy	Retail	Interior Design, Landscape Design	Construction 2020
Swimming Pool Complex, University of Colombo	Sports	Consortium	Design 2021

Project	Category & Floor Area	Services Provided	Stage & Expected Completion
202 Unit Apartment Complex, Negombo	Residential	Architectural / Interior Design	Piling completed 2023
152 Unit Apartment Complex, Battaramulla	Residential	Architectural / Interior Design	Building approval 2023
Palliative Care Center, Anuradhapura Hospital	Healthcare	Consortium	Tender Stage 2021
Apartment Complex, Colombo 06	Residential	Consortium	Tender Stage 2021
Luxury Apartment Complex, Colombo 07	Residential	Consortium	Construction 2021
04 unit luxury housing development, Etul Kotte	Residential	Architectural / Interior	Design 2021
High Specification Luxury Residence, Malambe	Residential	Consortium	Construction 2021
High Specification Luxury Residence, Rajagiriya	Residential	Consortium	Detail Design 2021
High Specification Luxury Residence , Colombo 06	Residential	Consortium	Detail Design 2021
High Specification Luxury Residence , Madiwela	Residential	Consortium	Detail Design 2021





# completed **projects**

key projects

Project	Category & Floor Area	Services Provided	Year of Completion
50 storey mixed development project, Colombo 02	Retail, Leisure & Hospitality <b>1,100,000 sq.ft</b>	Architectural (in collaboration with AEDAS Architects)	2018 -Retail 2020-Other areas
Grand Monarch Reception Hall & Restaurant Complex, Thalawathugoda	Leisure & Hospitality <b>39,000 sq.ft</b>	Architectural / Interior Design	2012
23 room Reefs Edge Luxury Beach Hotel, Uswetakeyyawa <b>Winner - Asia Pacific Property Awards Best Hotel Architecture, Sri Lanka 2016</b>	Leisure & Hospitality	Architectural / Interior Design/ MEP Engineering	2014
19 storey, 92 unit apartment complex, Kandy	Residential	Finishing & construction stage architects	2018
Grand Ark, Banquet Hall, Uswetakeyyawa	Leisure & Hospitality <b>15,000 sq.ft</b>	Architectural / Interior Design/ MEP Engineering	2014
Department Store, Kandy <b>Winner - Asia Pacific Property Awards Retail Interior, Sri Lanka 2019</b>	Retail <b>45,000 sq.ft</b>	Architectural / Interior Design	2016
Department Store, Kiribathgoda	Retail <b>55,000 sq.ft</b>	Architectural / Interior Design	Retail
Shanghai Terrace Restaurant, Pitakakotte	Leisure & Hospitality <b>4500 sq.ft</b>	Interior Design	2011

Project	Category & Floor Area	Services Provided	Year of Completion
7 storey mixed development project (Super Market, Department Store, Apartments), Moratuwa	Retail / Commercial <b>46,000 sq.ft</b>	Consortium	2019
Luxury Apartment Complex, Colombo 07	Residential <b>46,000 sq.ft</b>	Consortium	2019
Corporate building for SLT, Anuradapura	Commercial <b>14000 sq.ft</b>	Consortium	2019
Amazon Teas Corporate Interior, Colombo 10 <b>Winner - Asia Pacific Property Awards Corporate Interior, Sri Lanka 2019</b>	Commercial <b>3500 sq.ft</b>	Interior	2019
Arpico Hyde Park Corner Hypermarket	Retail / Commercial <b>70,000 sq.ft.</b>	Interior Design (new redesign in progress)	2013
Fashion Store, Nugegoda	Retail /Commercial <b>4800 sq.ft</b>	Interior Design	2017
Department Store Extension, Kiribathgoda	Retail /Commercial <b>37,200 sq.ft</b>	Consortium	2019
Department Store, Ja Ela	Retail /Commercial <b>35,000 sq.ft</b>	Architectural / Interior	2013
Restaurant of an International Chain, Flower Road, Colombo	Hospitality <b>3500 sq.ft.</b>	Consortium	2017
D.D.Athukorala Supermarket, Kegalle	Retail / Commercial	Interior Design	2012

Project	Category & Floor Area	Services Provided	Year of Completion
Expo-Rail Carriage Interiors <b>Winner - Asia Pacific Property Awards Highly Commended: Public Service Interior, Sri Lanka 2015</b>		Interior Design	2011
Papirus Paper Office Interior, Colombo 02	Retail / Commercial	Interior Design	2013
Laksala Handy Craft Outlet, Race course	Retail / Commercial	Interior Design	2012
High Specification Luxury Residence, Battaramulla	Residential <b>8000 sq.ft</b>	Consortium	2019
High Specification Luxury Residence, Ragama	Residential <b>6500 sq.ft</b>	Consortium	2019
High Specification Luxury Residence, Rajagiriya	Residential <b>4000 sq.ft</b>	Consortium	2019
High Specification Luxury Residence, Colombo 8 <b>Winner - Asia Pacific Property Awards Residential Architecture, Sri Lanka 2016</b>	Residential <b>5500 sq.ft.</b>	Consortium	2014
High Specification Luxury Residence, Kandy <b>Winner - Asia Pacific Property Awards Best Residential Architecture, Sri Lanka 2019</b>	Residential <b>2000 sq.ft.</b>	Consortium	2014

# projects

## in detail — —





# Mixed developments

---

key projects

# Colombo City Centre Mixed Development

Colombo, Sri Lanka  
collaboration with Aedas

<b>Involvement</b>	Collaborative Architects for design stage & Lead architects for construction stage
<b>Floor area</b>	1,100,000 sq.ft
<b>Completion</b>	Retail Mall September 2018 Apartments May 2020



48 story tower is standing on a unique location facing Beira Lake in the heart of Colombo and one of the latest additions to the skyline of the city.

200 apartments, 190 key Next Hotel and 250,000 sq.ft of retail space is included in the development along with other relevant facilities









# DMN Super

Moratuwa, Sri Lanka

**Involvement** Consortium Consultant

**Floor area** 75,000 sq.ft

**Completion** 2018



The design features an attractive triple height entrance and includes a supermarket, fashion & other retail outlets, a food court, car parks & 4 furnished apartments. The top floors are set back from the street edge allowing for an open terrace which is an alfresco area for the food court.

Considering the short stay concept, the service apartments feature a spacious living and dining area overlooking a large terrace with tropical plants and breathtaking vistas towards the Indian Ocean.





# Mixed Development

Katugasthota, Kandy, Sri Lanka

**Involvement** Architectural Design & Interior Design

**Floor area** 25 floors

**Current stage** Conceptual Design



Facing main Kandy – Katugasthota road with breathtaking views all around, this development demanded a large hyper market, restaurants, lifestyle complex and luxury apartments along with 250 car parks away in multiple tower levels.



# Mixed Development

Colombo 03, Sri Lanka

**Involvement** Conceptual Design Proposal

**Floor area** 880,552 sq.ft.

**Current Stage** Conceptual Proposal



A mixed development amalgamating multiple land parcels into one large development.

The proposal includes large retail mall, city hotel & apartments overlooking the Indian Ocean.



# Savoy Multiplex & Entertainment Centre

Colombo, Sri Lanka

**Involvement** Architectural Design, Interior Design

**Floor area** 180,000 sq.ft

**Current Stage** Concept Design



The new seven screen multiplex will be a fully-fledged entertainment complex complete with restaurants, bars, gaming lounges and will include more than 200 car parks.







# Retail

---

key projects



# Department Store

Kandy, Sri Lanka

**Involvement** Exterior Design, Interior Design

**Floor area** 37,000 sq.ft

**Current Stage** Completed



With design details and styling inspired from the traditional Kandyan motif of 'Binara' flower, the exterior & interior designs brings a contemporary retail experience to Kandy along with the brand promise of Thilakawardhana.



## Awards & Publications :

Featured in The Architect Magazine,  
2017









# Retail & Entertainment Complex

Kandy, Sri Lanka

**Involvement** Architectural Design, Interior Design

**Floor area** 150,000 s q.ft

**Current Stage** Practical Completion



Complete with four floors of retail mall, four screen cinema, food courts and two floors of rentable office areas, this is the first mixed development of its kind in Kandy.



# Arpico Hyde Park Corner

Colombo, Sri Lanka

**Involvement** Architectural Design, Interior Design

**Floor area** 9,000 sq.ft / site extent : 65,000 sq.ft

**Current Stage** Completed



Fresh produce area was a key section at Arpico hyde park corner and fresh products sold at Arpico was specifically highlighted by most of the design elements such as textures, colours and lighting.

Interior was design to highlight the fresh products as well as to add up Knorr branding characteristics in to the interior. This area was also designed to attract the customers.







# Department Store

Kiribathgoda, Sri Lanka

**Involvement** Architectural Design, Interior Design,  
Structural Design, MEP Design &  
Quantity Surveying

**Floor area** 37186 sq.ft

**Current Stage** Completed



An elaborate and fashionable lifestyle space which brings a luxury retail experience to the area. The opulent character of the building is brought by the elegant façade and is heightened by the spacious interior, lit with the warm glow from the lighting.



## Awards & Publications :

Muse Design Awards 2020, New York  
Silver Award,  
Commercial Architecture









# Sriyani Dress Point

Kandy, Sri Lanka

**Involvement** Interior Design.

**Floor area** 85000 sq.ft.

**Completion** 2020



An elaborate and welcoming lifestyle space which brings a luxury retail experience to the Kandy area. The dramatic interior of the building is brought by the lines, shapes and patterns and is heightened by the spacious colours and lighting.











# Crescat Corporate mall

Colombo, Sri Lanka

**Involvement** Architecture and Interior Design

**Floor area** 109,000 s.ft.

**Current stage** Pre-contract



Conversion of Crescat Boulevard into an A grade corporate office building includes usage of the existing structure but completely renovating its interior to suit a much more efficient corporate office function.

The design includes a feature common meeting area inspired by "high tech" interior spaces of the science fiction spaceship "USS Enterprise" within the double height interior and all common corridors and other meeting / socialising areas are designed to suit the function while providing a pleasant and exciting working environment.



# Department Store

Ja Ela, Sri Lanka

**Involvement** Architectural Design & Interior Design

**Floor area** 25,000 sq.ft.

**Current Stage** Conceptual Design



This multi-story department store for Thilakawardana Textiles containing of more than eight different departments category for all fashion and lifestyle of the consumers in the area.



# Thilakawardhana Department Store

Nittambuwa, Sri Lanka

**Involvement** Architectural Design & Interior Design

**Floor area** 55,000 sq.ft.

**Completion** 2020



Boasting one of the longest retail facades facing Kandy road, the design attempts to surprise and delight passers by with interesting shop windows and a detailed exterior.

The neo classical style was adopted to provide a suitable scale to the pedestrian space outside while allowing for a delightful facade with a series of shop display windows.

Each window is decorated with a thematic display suitable of the time.





# Shopping Mall

Rathmalana, Sri Lanka

**Involvement** Architectural Design & Interior Design

**Floor area** 16,6797.56 sq.ft.

**Current stage** Conceptual Proposal



Singer group is a large diversity company with unmatched throughout Sri Lanka since 1877, brings a novel concept in retail and lifestyle experience in one mixed development. The development will include a retail mall, a flagship Singer lifestyle complex, cinema & entertainment facilities and an urban park and street front food and beverage facilities.







# Commercial

key projects

# SLT Corporate Office

Anuradhapura, Sri Lanka

**Involvement** Architectural Design, Structural Design,  
MEP Design, Quantity Surveying &  
Project Management

**Floor area** 13,7500 sq.ft

**Current Stage** Completed



An eye catching land mark to the Anuradhapura area. The vibrant façade and its glow of lighting makes a dramatic appearance to the SLT premises. The inviting quality of the entrance and the pleasant interior brought comfortable service experience to its customers.



# Bread Talk

Colombo, Sri Lanka

in collaboration with PWA Architects

**Involvement** Architectural Design, Interior Design

**Floor area** 12,270 sq.ft

**Completion** May 2014



Two story Bread Talk flagship store with stand along facilities, party room and central kitchen & stores.



# TTK City

Kiribathgoda, Sri Lanka

**Involvement** Architectural Design & Interior Design

**Floor area** 28,655 sq.ft.

**Current Stage** Piling



Comprising of a food court and two floors of cinemas, TTK City is an exciting addition to the thriving suburb of Kiribathgoda.









# Hospitality

key projects

# Reefs Edge Hotel

Uswetakeiyawa, Sri Lanka

**Involvement** Architectural Design, Interior Design & MEP design Interior design concepts in collaboration with Aedas Interiors

**Floor area** 35,000 sq.ft

**Completion** May 2014



The reefs edge hotel is located in Uswetakeiyawa, 30 minutes away from the capital Colombo in Sri Lanka. The project is a sea side luxury beach hotel with 23 luxury hotel rooms and a separate banquet facility in elegant contemporary minimalist design over 3 floors, which aims to boost the natural splendor of its surroundings.



## Awards & Publications :

Best Hotel Architecture, Sri Lanka  
Asia Pacific Property Awards 2015

CNN Travel "Chick & Stylish,  
Sri Lanka's New Breed of Hotels".  
October 2014









# Grand Arc Banquet Hall

Uswetakeiyawa, Sri Lanka

**Involvement** Architectural Design, Interior Design & MEP Design Interior design concepts in collaboration with Aedas Interiors.

**Floor area** 15,000 sq.ft

**Completion** May 2014



Consisting of banqueting facilities for 250 people, The interior design was inspired by the nearby beach and the coral reefs. The entrance foyer is complemented by a landscape of over flowing reflective pool with fountains



# Mainland China

Colombo, Sri Lanka

Collaboration with speciality Restaurant Ltd, India

**Involvement** Architectural Design, Interior Design & MEP Design

**Floor area** 2.500 sq.ft

**Completion** December 2017



Located in a prominent intersection in Colombo, this restaurant building maintains a dialogue with the street while providing a secluded interior for its patrons. Design brief required an open plan restaurant within two floors along with private dining rooms, kitchens and washrooms. An expressive façade is maintained at the front which highlights over other restaurants. Laser-cut screens with traditional Chinese geometric patterns provides interest to the façade & an added sense of privacy while offering a view to the streets. Materials such as rustic stone finishes, black matt tiles & a black ceiling adds drama to the interior ambience & a sense of intimacy.

Involvement











# Monarch Imperial

Thalapathpitiya, Sri Lanka

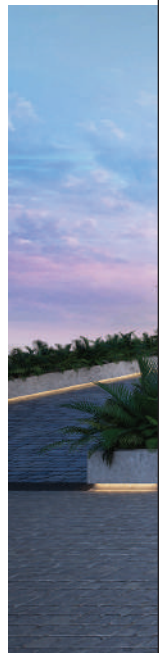
**Involvement** Architectural Design & Interior Design.

**Floor area** 145,000 sq.ft

**Completion** December 2019



Located on a unique land plot with a water body on one side and scenic view of the paddy fields on the other; the development includes 1500 capacity banquet hall, 06 thematic restaurants with 20 private dining rooms and parking for over 250 cars.





# Waterfront Villa

Bagan, Myanmar

**Involvement** Architectural Design, Interior Design

**Floor area** 2.500 sq.ft

**Current Stage** Conceptual Design



The design attempts to use existing site terrain and low lying water logged areas to create a new water body and a series of luxury villas overlooking the water.





# Grand Monarch

Thalawathugoda, Sri Lanka

**Involvement** Architectural Design, Interior Design,

**Floor area** 42,000 sq.ft

**Completion** December 2012



Equipped with tree banquette halls a multi cuisine restaurant, with alfresco dining facilities and VIP rooms this is one of the latest additions to the wine and dine scene of Colombo suburbs.





# Banquet Hall & Lifestyle Complex

Pelmadulla, Sri Lanka

**Involvement** Architectural Design, Interior Design, Structural, MEP Design & Project Management

**Floor area** 50,000sqf

**Current Stage** Construction



A design inspired by the blue sapphire and its gem cuts, the design intends to celebrate the place and function alike.



# Roxy

Colombo, Sri Lanka

**Involvement** Conceptual Proposal

**Floor area** 165,951 sq.ft.

**Current stage** Conceptual Proposal



Located on a prime parcel of land facing Galle road, this development includes city hotel, studio apartments, consisting of 150 keys and large banquet halls to aim for the demands for the areas.



# 80 Room Resort Hotel

Beruwala, Sri Lanka

**Involvement** Conceptual Design Proposal

**Floor area** 83,958 sq.ft.

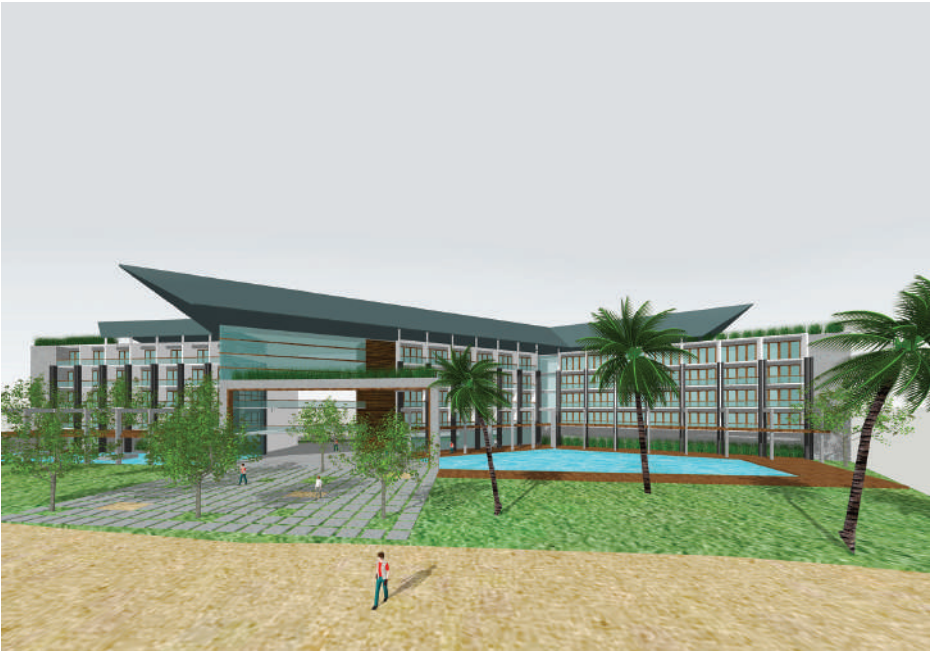
**Current Stage** Conceptual Proposal



Containing of 80 rooms this unique beach hotel is designed to the concept of an activity hotel with the focus on the beach and water sports.

Design inspirations for the unique and expressive roof form the traditional large fishing vessels (Bala Oru) common to the south western coast.







# Eco Resort

Sigiriya, Sri Lanka

**Involvement** Architectural Design &  
Interior Conceptual Design Proposal

**Floor area** 67,522 sq.ft.

**Current Stage** Conceptual Design Proposal



A luxury villa resort with 20 chalets located around a water body.

Located within grasslands and dry zone forests close to Sigiriya, this eco resort design is predominantly a timber and steel construction. All chalets are located on timber stilts lightly touching the ground, with minimal disruption to the natural vegetation on location.



# Tree top Cabins

Norton Bridge, Sri Lanka

**Involvement** Architectural Design, Interior Design

**Floor area** 14000 sq.ft.

**Current Stage** Schematic



A 10 treetop cabins development with a remarkable view of Seven Virgins mountain range and two waterfalls on both sides of the site. Located within highly vegetation area in the wet zone forest close to Lakshapana waterfall, the treetop cabin design is predominantly a timber and steel construction.

All cabins are located on tree concrete columns lightly touching the ground, with minimum disruption to the soil and the natural vegetation at the site. Random layouts and orientations has been done to gain isolate user experience within the design.





# Educational

key projects



# SLTC Campus

Colombo, Sri Lanka

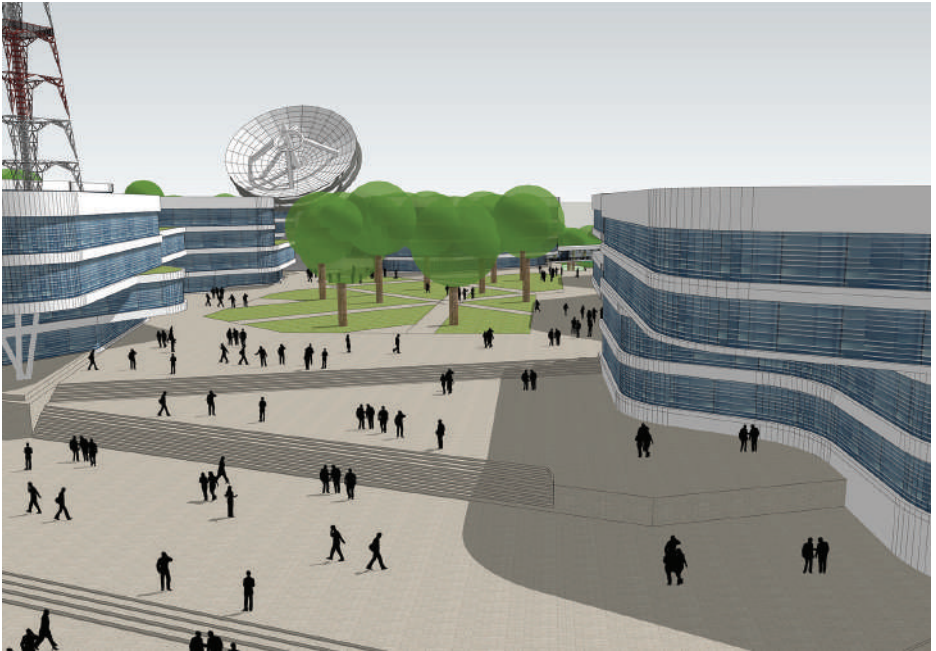
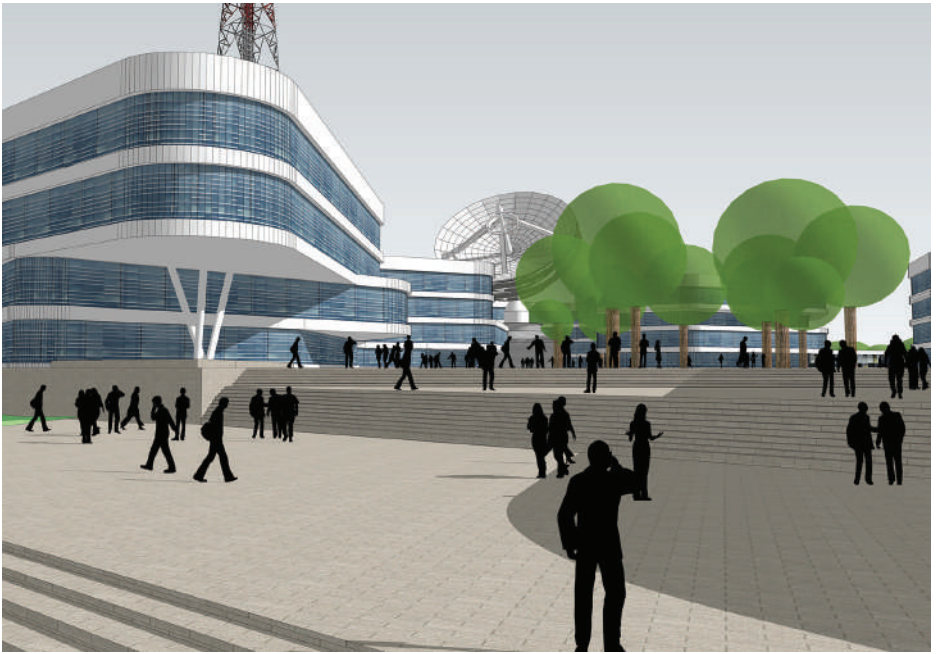
**Involvement**      Conceptual Design Proposal

**Floor area**      2,000,000 sq.ft.



The 43 acre SLTC Campus was conceptualized to be the pinnacle of research based technological higher education in sri lanka while offering generous green spaces for the student community.

Distinctly dynamic architectural language emits a "fluidic movement" of spaces within the campus while opening up vistas of natural greenery around. the disused satellite from the former Earth-Satellite station and the telecommunication museum were preserved for their historic value.



# Commercial & Educational Complex Master Plan

Sri Lanka

**Involvement** Architectural Design, Interior Design,

**Floor area** 42,000 sq.ft

**Current Stage** Concept Design



Maximizing development potential of the land, a high-rise mixed development is proposed to be developed in phases. Development is proposed established as a major corporate hub outside of Colombo.





# Industrial

key projects



# Phoenix Industries

Horana, Sri Lanka

**Involvement** Architectural Design, Interior Design

**Floor area** 37,000 sq.ft

**Current Stage** Completed

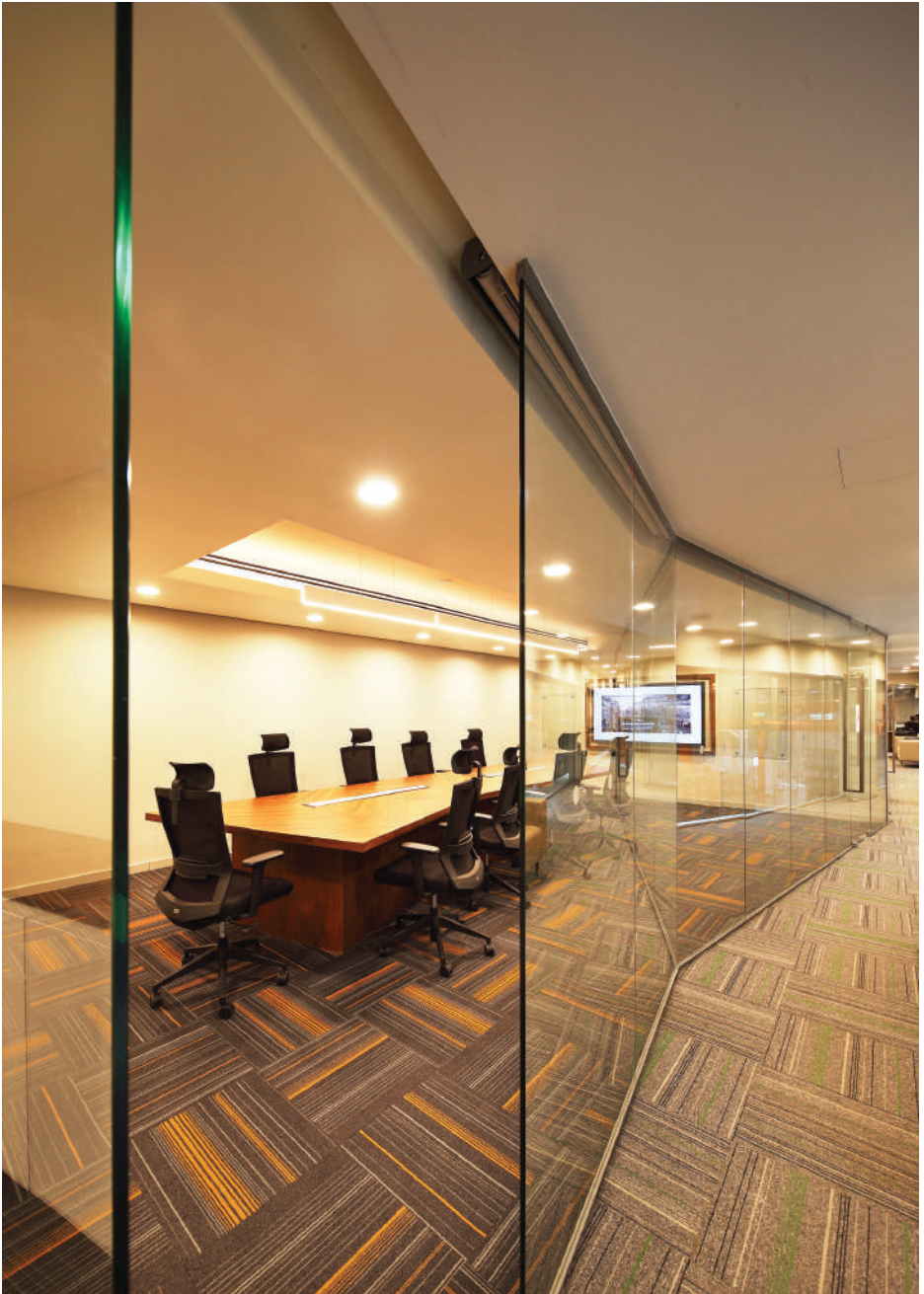


A complete renovation, extension and exterior design for an existing industrial shed to upgrade it to a world class manufacturing facility with food grade standards.









# Thilakawardana Logostics

Makola, Sri Lanka

**Involvement** Architectural Design

**Floor area** 60,000 s.ft.

**Current Stage** Completed



A wholly utilitarian building performing as the logistics hub for Thilakawardhana Group was designed to maximise space utilisation and internal functions including receipt of good vial container, tagging, recording, storage and distribution.

A steel screen facade interrupted with exposed brick veneer pattern and windows gives interest to the buildings exterior while not looking like a typical warehouse building.







# Residential

---

key projects

# Layered House

Colombo, Sri Lanka

**Involvement** Architectural Design, Interior Design, Structural Design, MEP Design, Quantity Surveying and Project Management

**Floor area** 5,000 sq.ft

**Current Stage** 2015



Designed as a high specification luxury residence for a young family and situated in a densely built area, the design is a layered collection of spaces penetrated with three courtyard gardens & two roof top gardens. Encouraging natural light and ventilation has been a key focus of the design. A front road side screen and plant wall gives filtered, views towards the street.

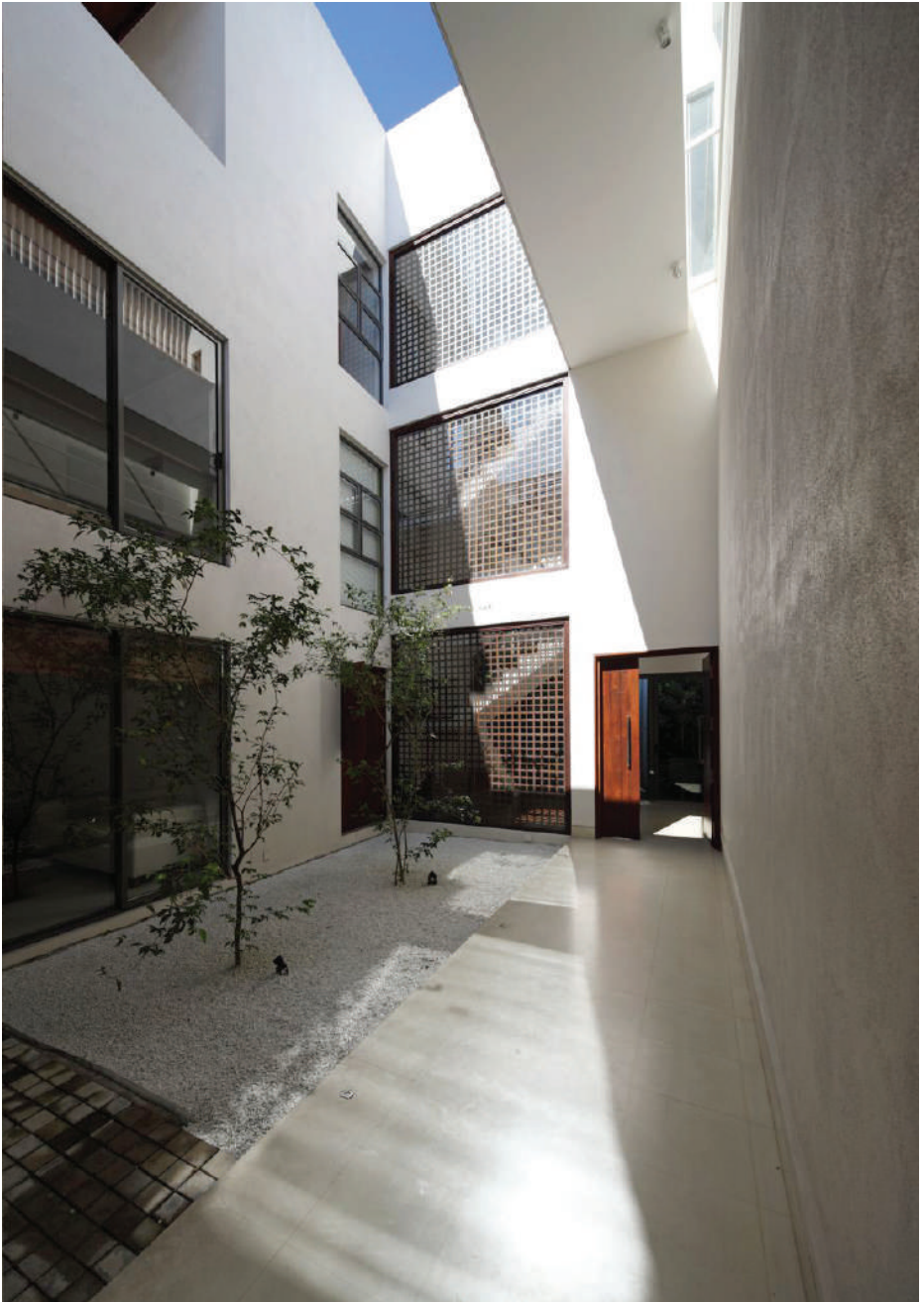


## Awards & Publications :

Highly commended - Architecture  
single residence Sri Lanka.  
Asia Pacific Property Awards 2016

Featured in "The Contemporary House"  
by Jonathan Bell and Ellie Stathaki  
Thames & Hudson 2018









# Floated House

Kandy, Sri Lanka

**Involvement** Architectural Design & Interior Design

**Floor area** 13,000 sq.ft

**Completion** 2014



A private residence overlooking an acre of gardens and agricultural land and fascinating views out towards.

The living dining space constructed on a single column floating over the landscape with views on all sides.

Building has been sunk-in from the road level allowing for continued views and privacy for the dwelling.



## Awards & Publications :

Best Architecture  
Single Residence, Sri Lanka.  
Asia Pacific Property Awards 2019







# Tropical Stack House

Baththaramulla, Sri Lanka

**Involvement** Architectural Design, Interior Design, Structural Design, MEP Design, Quantity Surveying and Project Management.

**Floor area** 8,000 sq.ft

**Completion** 2019



A main design strategy is to admit adequate natural light and ventilation to the dwelling, while providing a necessary amount of shading. Indoor double height spaces covered with expansive window walls bring in daylight while affording generous views of the garden. Semi open spaces with louvers & a roof top verandah also encourage daylight & natural ventilation. A special feature of the road side elevation is the plant wall covered with a timber screen, giving filtered views towards the road. This adds a special quality to the road side elevation of the dwelling while acting as passive ventilation & cooling strategy.



## Awards & Publications :

Muse Design Awards 2020, New York  
Gold Award,  
Residencial Architecture











# Embraced Gardens

Rajagiriya, Sri Lanka

**Involvement** Architectural Design, Interior Design, Structural Design, MEP Design, Quantity Surveying & Project Management.

**Floor area** 4360sq.ft

**Current Stage** 2019



This is a luxury private residence, situated in a highly urbanized context at Rajagiriya Gardens. Main design strategy is to create habitable spaces with greenery to provide necessary relaxation.

A key design focus of this dwelling is to admit adequate natural light and ventilation to the house, while providing a necessary level of shading. This is achieved through spaces penetrated with semi open garden areas with pergolas and louvers, an open to sky terrace and a sit out deck. The house in a sense attempt to embrace the garden spaces around it. A textured brick wall at the entrance acts as a separation and a passive ventilation screen.

The semi open green terrace, with frangipani trees and covered by a screen, gives filtered views towards the street.











# House Full Of Light

Kaduwela, Sri Lanka

**Involvement** Architectural Design & Interior Design

**Floor area** 1,850 sq.ft

**Completion** March 2008



A rectangular cube in shape, the house exemplifies simplicity and purity of form. Design makes allowances for an “L” shaped garden and double-parking space.

Its two stories include living, dining, pantry, two bedrooms, two bathrooms, office space and its flat roof permits a rooftop garden.



# Urban House

Colombo, Sri Lanka

**Involvement** Architectural Design & Interior Design

**Floor area** 5,435.77 sq.ft.

**Completion** 2013



Located in a tight parcel of land, this luxury residence optimizes the space and count of 3 bedrooms, a master suite containing one floor, kitchen, pantry and air handling utility area and parking for two vehicles.



# Sculptural House

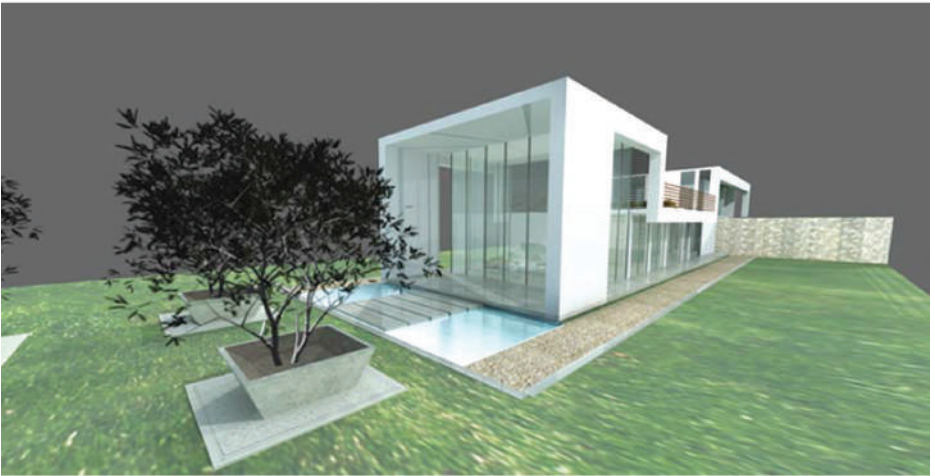
Kadawatha, Sri Lanka

**Involvement** Conceptual Design

**Floor area** 2,500 sq.ft.

**Current Stage** Conceptual Design Proposal





# Greenwood Mansions

Rajagiriya, Sri Lanka

**Involvement** Architectural Design, Interior Design

**Floor area** 11,900 sq.ft

**Current Stage** Approval stage



Located in Adikaram Mawatha, Rajagiriya, the project consists of four luxury mansions with a large landscape area and car parking facilities.





# Apartments

key projects



# Bullers Lane Residencies

Colombo, Sri Lanka

**Involvement** Architectural Design, Interior Design,  
Structural Design, MEP Design, Quantity  
Surveying & Project Management

**Floor area** 15,000 sq.ft

**Completion** 2019



A luxury apartment complex with two and three bedroom units as well as a five bedroom penthouse.

The design provides a rooftop with fascinating city views and an abundance of natural light and ventilation to all spaces in addition to high specification luxury finishes and fittings.









# Dynasty Residencies

Kandy, Sri Lanka

In collaboration with RDC Singapore

**Involvement** Architectural Design, Interior Design for construction & finishing stage.

**Floor area** 255,000 sq.ft

**Current Stage** Completed



Currently the largest & the tallest luxury apartment complex in Kandy.

Dynasty Residence has been acclaimed for its high specification finishes, use of green technology and fascinating views offered.





# 333 Pinnacle, Beach Front Condominiums

Negombo, Sri Lanka

**Involvement** Architectural Design, Interior Design

**Floor area** 363,000 sq.ft

**Current Stage** Piling



Capturing breath taking views out to the Indian Ocean and Island view filled with coconut groves as far as the eye can see, the development ensures the calm and serenity of everyday living and the exciting holiday atmosphere in one of Sri Lanka's most vibrant holiday locations.











# 19 Guilford Luxury Condominium

Colombo, Sri Lanka

**Involvement** Architectural Design, Interior Design,

**Floor area** 23,000 sq.ft

**Current Stage** Under Construction



This super luxury condominium complex consisting of four apartments and a rooftop swimming pool is located in one of the most exclusive area of Colombo.



# Monarch Regency

Ethulkotte, Sri Lanka

**Involvement** Architectural Design, Interior Design

**Floor area** 82,500 sq.ft / site extent: 68 perches

**Current Stage** Under construction



An apartment complex with two- and three-bedroom units as well as single bedroom units. Development includes total of 48 units with ample parking and rooftop pool with breathtaking view of the Diyawanna Lake.



# Marine Drive Luxury Apartments

Colombo, Sri Lanka

**Involvement** Conceptual Design Proposal

**Floor area** 283,545 sq.ft.

**Current Stage** Conceptual Proposal



A luxury residential & lifestyle complex overlooking the Indian ocean on Marine Drive containing of luxury apartments, utility floor with swimming pool, spa, gym and retail floor at ground level.





# Apartment Complex at Colombo 06

Colombo, Sri Lanka

**Involvement** Architectural Design, Interior Design,  
MEP Design, Quantity Surveying &  
Project Management.

**Floor area** 42,000 sq.ft

**Current Stage** Pre Contract



An apartment complex with two and three bedroom units. Development includes 24 units with ample parking and roof top garden for recreation with breathtaking views of the South of Colombo.



# Electra Luxury Condominiums

Koswatta, Sri Lanka

**Involvement** Architectural & Interior Design

**Floor area** 277,000 sq.ft

**Current Stage** Scheme Design



Maximizing development potential of a triangular site, this 23 storey development ensures fascinating views of the surrounding countryside to all apartments.













# Interior

---

key projects

# Amazon Teas Corporate Office

Dematagoda, Sri Lanka

**Involvement** Interior Design & MEP Design

**Floor area** 3,500 sq.ft

**Current Stage** Completed



The design was inspired by the dynamism & youthfulness of the people and their brand, which is a promise of organically harvested tea and value from tip to cup. The interior attempted to project out this personality in visual and spatial form. Colour schemes, textures and lighting has been carefully designed to optimize the comfort and work efficiency. The interior was mainly designed incorporating colours, textures & aroma of herbs and spices blended up with Natural light.



## Awards & Publications :

Retail Interior, Sri Lanka  
Asia Pacific Property Awards 2019











# Havelock City Apartment

Thimbirigasyaya, Sri Lanka

**Involvement** Interior Design

**Floor area** 1640 s.ft.

**Current Stage** Completed



This family apartment interior was designed to maximize space utilization while providing an airy & pleasant interior. Each room was carefully studied for user requirements & space requirements. Storage cupboards, study tables, beds etc were all custom designed to fit the available space while giving maximum utility. A colour palette of blond wood finish laminates, white and a full colour washing of the walls in "Egyptian cotton" colour provided the added spatial experience.

In the living / dining area solid wood dining table & coffee table finished in raw timber finish with only a sealant gives a "finished but rustic" feel while complementing the blond wood laminates and the off white chairs and upholstery. A custom designed artwork of triangular timber pieces completes the living / dining area interior.





# KWA Office

Colombo, Sri Lanka

**Involvement** Interior design & building renovation

**Floor area** 2000 s.ft.

**Current Stage** Completed



Team at KWA architects converted this 60 year old residence into their studios. The timber ceiling & cement tile floor was retained in the lobby area while new ceilings, lighting and flooring was introduced to the internal office areas.

Interior furniture was selected to be contemporary but with a touch of antiquity in the lobby while the solid Teak and Kumbuk mixed table is the highlight of the meeting room.

Internal office / studio areas are highly function oriented encouraging sharing of ideas with space provided for design development, sample selection and discussions in addition to the actual workstations.



# Expo Rail

## Railway Carriages

**Involvement** Interior Design

**Completion** 2014



The project is offering contemporary luxury rail travel using 50 years old abandoned rail carriages and reused aircraft seating. This innovative & sustainable concept of 'reuse' was introduced as a private-public partnered transportation solution to the Sri Lankan railway system.



### Awards & Publications :

Highly Commended -  
Public Service Interior, Sri Lanka  
Asia Pacific Property Awards 2015



# Dr. Soma Edirisinghe Museum

Pitakotte, Sri Lanka

**Involvement** Architectural Design & Interior Design

**Floor area** 2,000 sq.ft

**Completion** August 2014



Celebrating over four decades of philanthropic activities by Dr. Soma Edirisinghe, this museum is a showcase for social service achievements.

The facility includes some of the most modern interactive and proximity operated displays as well as still project displays in a contemporary style and lighting.





# Hotel Sapphire

Colombo, Sri Lanka

**Involvement** Architectural Design & Interior Design

**Floor area** 2,000 sq.ft

**Completion** August 2014



One of the oldest hotel complexes in Colombo, Hotel Sapphire has a dedicated clientele and a reputation spanning decades. A spaced out renovation is upgrading the hotel and it's guest facilities to a more contemporary standard.



# Japanese Restaurant

Thalapathpitiya, Sri Lanka

**Involvement** Interior Design

**Floor area** 950 sq.ft

**Current Stage** Under construction



A Restaurant with the seating capacity for more than 40 people and also the private dining rooms at the upper level will expand the capacity of the restaurant. Selected color pallet and the light color timber finishes were used to create the Japanese identity.





# Indian Restaurant

Thalapathpitiya, Sri Lanka

**Involvement** Interior Design

**Floor area** 950 sq.ft

**Current Stage** Under construction



Inspired from the exquisite interiors from the Rajasthan palaces, this restaurant is with the seating capacity for more than 40 people and also the private dining rooms at the upper level will expand the capacity of the restaurant.



# Thai Restaurant

Thalapathpitiya, Sri Lanka

**Involvement** Interior Design

**Floor area** 950 sq.ft

**Current Stage** Under construction



The blend of the cozy design elements and traditional Thai motifs were used to create a interesting space with the Thai identity to the restaurant. More than 40 seats are there in the restaurant and also additional seating at the front verandah for outdoor dining.



# Sri Lankan Restaurant

Thalapathpitiya, Sri Lanka

**Involvement** Interior Design

**Floor area** 1400 sq.ft

**Current Stage** Under construction



All the details were developed to create the traditional Sri Lankan identity in the space and also to give a very unique experience for the user.





# Western Restaurant

Thalapathpitiya, Sri Lanka

**Involvement** Interior Design

**Floor area** 900 sq.ft

**Current Stage** Under construction



A Restaurant with the seating capacity for more than 40 people to experience the English pub atmosphere. Modern rustic finishes and details will enhance the character of the restaurant interior.



# Chinese Restaurant

Thalapathpitiya, Sri Lanka

**Involvement** Interior Design

**Floor area** 1,350 sq.ft

**Current Stage** Under construction



Modern design elements and details were developed to give the Chinese identity to the restaurant. 72 seats are there in the restaurant and also additional seating at the front verandah for outdoor dining.









# Health care

---

key projects

# Palliative Care Center

Anuradhapura, Sri Lanka

**Involvement** Architectural Design, Interior Design  
& MEP Design

**Floor area** 28,500 sq.ft / site extent : 2 acres

**Current Stage** Conceptual design



Situated in a rural environment and building complex is to be built for treatment of cancer patients in the region. The building is designed to accommodate 40 patients with necessary health facilities whilst bringing back the architectural influence of ancient Anuradhapura.







# Sports

key projects

# Colombo university swimming pool project

Colombo, Sri Lanka

## Involvement

**Floor area** 36,000 sq.ft

**Current Stage** Approval stage



A ten lane swimming pool was designed according to the FINA standards and also to fulfill the major requirement of the University. Standing on a premium location will get more public attraction to the development. 500+ seating capacity and all other related amenities were designed to host an event in any scale.



# personal profiles



## Thilan Koththigoda

AIA(SL), RIBA, RDI(New York), GreenSL(AP),  
M.Sc.(Architecture), B.Sc.(Built Environment),  
Dip.(Advertising and Communication)

Chartered Architect



## Personal Details

Designation	Partner (KWA Architects)
Mobile	+94777618518
Email	projects@kwa.bz



## Academic Qualifications

May 2004	<b>M.Sc. (Architecture)</b> - RIBA Part II Exemption. Faculty of Architecture, University of Moratuwa, Sri Lanka.
May 2002	<b>B.Sc. (Built Environment) First Class Honors</b> - RIBA Part I Exemption. Faculty of Architecture, University of Moratuwa, Sri Lanka.
Sept. 1998	<b>Diploma in Journalism &amp; Communication</b> – Distinction Sri Lanka Foundation Institute



## Professional Memberships & Awards

2014	Chartered Member, Royal Institute of British Architects
2014	Associate Professional, Green Building Council of Sri Lanka.
2014	Member, Retail Design Institute, New York.
June 2006	Associate Member, Sri Lanka Institute of Architects.

June 2006	Sri Lanka Institute of Architects award for best overall performance at the SLIA Part III examination.
March 2005	Prof.K.R.S Peiris Design award for the best designer in MSc (Architecture)
March 2005	Sri Lanka Institute of Architects Award for the MSc (Architecture) student who Has obtained the highest total marks in the Final year examination 2004
Feb. 2004	Graduate Member, Sri Lanka Institute of Architects.
May 2002	Prof. H.J.Billimoria Award for the graduate who has obtained the highest total Marks at the B.Sc. (Built Environment) Degree Final Year examination.



## Professional Employment

**December 2006 to date**

**Partner - KWA Architects**, No 37, School Lane, Colombo 3. Sri Lanka.

**Responsibilities** Detailed Design, Tendering, Job Running,  
Project Coordination & Management

**Key Projects**

- 4 Star Reefs Edge hotel, Uswetakeyyawa
- 30 Key City Hotel, Colombo 04
- Colombo City Center- 48 storey mixed development, Col 02
- Tea packing facility in Kaduwela
- 63 Unit Luxury apartment complex, Colombo 05
- Cinema Complex, Colombo 06
- Grand Monarch Reception Hall & Restaurant Complex
- Grand Ark Banquet Hall, Uswetakeyyawa
- 7 Storey Shopping & mixed development project, Moratuwa
- Expo-Rail Carriage Interior
- “Bread Talk” Fast food Outlet, Union Place Colombo
- Luxury Private residences in and around, Colombo
- Retail and office interiors in Colombo



### **June 2008 to April 2010**

**Project Architect - AECO Development, LLC, The Blue City, Oman.**

**Responsibilities** Detailed Design, Construction & Shop Drawings preparation,  
Job Running, Project Coordination & Management

**Key projects**

- 5 Star 122 room Amphitheater Resort Hotel, The Blue City
- 700 Unit Luxury Sea Side Apartment Complex, The Blue City

---

### **June 2006 to December 2007**

**Project Architect - PWA Architects, 5, Hamers Place, Colombo 6, Sri Lanka.**

**Responsibilities** Job Running, Outline Design Proposals, Detailed Design,  
Project Coordination & Management.

**Key projects**

- 150 room Hospital Project , Colombo
- 40 Bedroom Retirement Facility, Uswetakeyyawa
- Mixed Development Schemes in Colombo.
- High Specification Residential Projects, Colombo

---

### **June 2005 June 2006**

**RIBA part II Architect - Graham Seabrook Partnership Studio Barn, Bury Farm  
Courtyard, Chesham, Bucks HP5 2JU, United Kingdom**

**Responsibilities** Job Running, Outline Design Proposals, Detailed Design,  
Project Coordination.

**Key projects**

- High-Spec Residence – Hamilton Terrace, London
- High-Spec Residence – Moor Park, Middlesex
- Mixed Development Scheme, Newcastle Upon Tyne
- Morecambe Bay Urban Waterfront Redevelopment –  
Competition Entry

**May 2005** 

**RIBA part II Architect - D.S. Worthington Ltd.** 93, Elm Drive, Harrow. HA2 7BY, United Kingdom

Responsibilities Outline Design Proposals, Detailed Design,  
Project Coordination.

Key projects

- Apartment complex, Caspian Sea, Iran (Schematic Proposal)
- Gracelands Nursing Home extension & renovation, Bolney, West Sussex
- Super Luxury residence, St. Johns Wood, London
- Housing / apartment complexes for varying private clients, London & Suburbs.

---

**June 2004 Sept. 2004** 

**Junior Project Architect - Team Architrave Chartered Architects,** 55, 5th lane, Colombo 3, Sri Lanka.

Key projects

- Urban Designs & master Planning for 13 cities & towns in the Eastern Province or the National Physical Planning Department.
- Boutique Hotel at Kalamatiya, Sri Lanka.
- Interior designs for Sifani Jewelers at Colombo & the Maldives.

---

**Nov. 2001 To Nov. 2002** 

**Junior Architect - Architrave Chartered Architects,** 55, 5th lane, Colombo 3, Sri Lanka.

Key projects

- Apartment complex, Elebank Road, Colombo
- Worker's recreational facility for Ansell Lanka, Biyagama.
- Urban Designs & schematic designs for the proposed Kotte Municipal Council

# personal profiles



## Thushari Wijesundara

AIA(SL), RIBA, M.Sc. (Architecture),  
B.Sc. (Built Environment),  
Dip.(Interior Design)UK

Chartered Architect | Interior Designer



## Personal Details

Designation	Partner (KWA Architects)
Mobile	+94779317517
Email	projects@kwa.bz



## Academic Qualifications

May 2004	<b>M.Sc. (Architecture)</b> - RIBA Part II Exemption. Faculty of Architecture, University of Moratuwa, Sri Lanka.
May 2002	<b>B.Sc. (Built Environment) Second Class (Upper)</b> Honors RIBA Part I Exemption. Faculty of Architecture, University of Moratuwa, Sri Lanka.
Dec. 2006	<b>Dip (Professional Interior Design) UK</b> Regents Academy, London



## Professional Memberships

2014	Chartered Member, Royal Institute of British Architects
June 2006	Associate Member, Sri Lanka Institute of Architects.
Feb. 2004	Graduate Member, Sri Lanka Institute of Architects.



## Professional Employment

**December 2006 to date**

**Partner - KWA Architects**, No 37, School Lane, Colombo 3. Sri Lanka.

**Responsibilities** Detailed Design, Tendering, Job Running,  
Project Coordination & Management

**Key Projects**

- 4 Star Reefs Edge hotel, Uswetakeyyawa
- 150 room Transit hotel Katunayake
- 30 Key City Hotel, Colombo 04
- Colombo City Center- 48 storey mixed development, Col 02
- Luxury Apartment Complex, Colombo 07.
- Mixed development project , Kiribathgoda
- Cinema Complex, Colombo 06
- Grand Ark Banquet Hall, Uswetakeyyawa I -
- Luxury Private residences in and around Colombo
- Retail and office interiors in Colombo

---

**July 2008 to April 2010**

**Project Architect** - AECO Development, LLC- The Blue City , Oman.

**Responsibilities** Detailed Design, Construction & Shop Drawings preparation,  
Job Running, Project Coordination & Management

**Key Projects**

- A-800 Unit Apartment complex-Blue City Project
- 500 Unit Luxury Apartment Complex- Blue City Project

---

**June 2006 to June 2007**

**Project Architect** - Sheran Henry Associates, 25/3, Lauries Road,  
Colombo 04, Sri Lanka

**Responsibilities** Job Running, Outline Design Proposals, Detailed Design,  
Project Coordination & Management, Tendering

- Key projects
- High Rise Office Building, Colombo 2
  - Keells Super- Super Markets Island wide
  - High Specification Residential Projects, Colombo
- 

#### August 2005 to June 2006

**RIBA Part II Architect** - Graham Seabrook Partnership, Studio Barn, Bury Farm Courtyard, Chesham, Bucks HP5 2JU, United Kingdom

Responsibilities Project Coordination & Job Running,  
Outline Design Proposals, Detailed Design,  
Tender Documentation, Tendering

- Key projects
- 25 Unit Luxury Apartment complex, Bedford
  - Morecambe Bay Urban Waterfront Redevelopment, Liverpool
  - 50 Room Nursing Home, Rickmansworth
  - Luxury Residential Project, London
- 

#### Oct. 2004 to July 2005

**RIBA Part II Architect** - Broadway Malyan Architects, 3 Weybridge Business Park, Addlestone Road, Weybridge, Surrey KT15 2BW, United Kingdom

Responsibilities Outline Design Proposals, Detailed Design, Tender,  
Documentation, Project Coordination.

- Key projects
- 200 Bed Hospital, Aldershot
  - Commercial and Residential Mixed Development, Epsom
- 

#### June 2004 to Sept. 2004

**Junior Project Architect** - Design Consortium (Pvt) Ltd., No 85, Kynsey Road, Colombo 8, Sri Lanka.

Responsibilities Outline Design Proposals, Design, Detailed Design,  
Contract Administration, Tendering

- Key projects
- Lifestyle complex, spa & car park, Colombo Plaza Hotel
  - Personalized housing projects in and around Colombo





KWA Architects – Chartered Architects & Interior Designers  
185/21, Havelock Road, Colombo 5, Sri Lanka | [www.kwa.bz](http://www.kwa.bz)